



# Paul Busse GARDEN RAILWAY

---

## CHOOSE A TOPIC TO EXPLORE:

- ABOUT PAUL BUSSE
  - G SCALE MODEL TRAINS
  - EXHIBITION FUN FACTS
  - EUROPEAN TRAVELS
  - WILD WEST TOWN
    - PLANTS
    - HOMES
  - WHO LIVES HERE?
    - PLANTS
    - HOMES
  - FAIRYTALE LAND
    - PLANTS
    - HOMES
  - MODEL TRAIN HISTORY
  - TRAIN CAR IDENTIFICATION
  - TRAIN FUN FACTS
  - TRAIN TALK
  - TRAIN HISTORY
-



©2020 White River Productions, used with permission

# PAUL BUSSE AT '92 AMERIFLORA

Paul Busse had a big break at AmeriFlora '92, an international horticultural exposition hosted here at Franklin Park. Busse and his team at Applied Imagination designed a train display in AmeriFlora's German-themed garden.

Made of dried plant material, Busse's display recreated a small German town inspired from photographs. It included an amazing king post bridge made of bent grape vine that continued to grow, despite being cut at both ends.

TOP

MORE →





# G SCALE MODEL TRAINS

The magic of *Paul Busse's Garden Railway* comes to life with model trains whizzing overhead and through the plant-based structures. This display would not be possible without Busse's discovery of the G scale model trains in a Baltimore hobby shop in 1975.

Unlike previous model trains, G scale model trains have the size and durability to be used outdoors. Busse's discovery of the G scale model train allowed him to combine his passions for landscape architecture and model trains to create the dynamic outdoor display we experience today.

[← BACK](#)

[TOP](#)

[MORE →](#)

# EXHIBITION FUN FACTS

---

Some interesting details about the exhibit  
to consider as you explore the miniature worlds.

**LENGTH OF TRAIN TRACK: 1,122 FEET**

**STRUCTURES CREATED BY PAUL BUSSE & APPLIED IMAGINATION: 51**

**BOTANICAL MODELS DONATED BY THE JOHN F. WOLFE ESTATE: 20**

**G SCALE TRAIN SETS: 9**

**UNIQUE BOTANICAL THEMES: 4**

**WATERFALLS: 2**

**BUBBLING BROOK: 1**

**ENCHANTED CHILDREN'S TREE COVE: 1**

**THE YEAR PAUL BUSSE GRADUATED THE OHIO STATE UNIVERSITY: 1972**

**THE YEAR APPLIED IMAGINATION WAS FOUNDED: 1991**

**THE YEAR APPLIED IMAGINATION PARTICIPATED IN AMERIFLORA: 1992**

 **BACK**

**TOP**

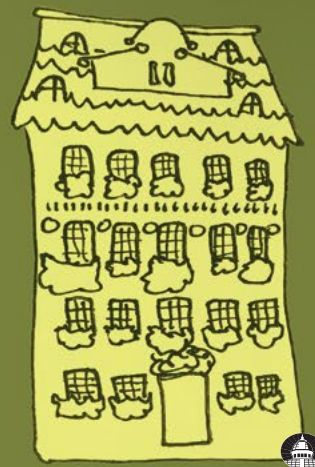
**MORE** 



# THE HOMES & FEATURES OF EUROPEAN TRAVELS



**GERMAN ROW HOUSE**



**SWISS HOUSE**



**THATCHED ROOF  
SWISS HOUSE**



**SWISS CHALET**



**FRENCH TRAIN STATION**



**GERMAN BARN**

**← BACK**

**TOP**

**MORE →**





THE HOMES & FEATURES OF  
**EUROPEAN  
TRAVELS**



**GERMAN HOUSE**



**FRENCH  
LIGHTHOUSE**



**SMALL  
LIGHTHOUSE**



**FRENCH MANOR**



**GERMAN BAKERY**

**← BACK**

**TOP**

**MORE →**





# TRAINS & THE WILD WEST

Trains were relatively new in the United States but made a significant impact on the Wild West, c. 1865-1895. The railroads opened up the country and allowed people to migrate from the East and settle in the undeveloped territory, the West West.

The year 1895 marked the end of the Wild West era and the beginning of a new phase for the train industry, as electric locomotives were introduced.



# WILD WEST TOWN

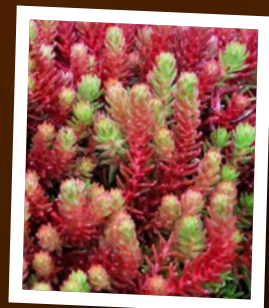
Do these wide open spaces with trees few  
and far between resemble a prairie?  
The effect was created using the following plants.



## LIME TWISTER STONECROP

*Sedum* 'Lime Twister'

SunSparkler® Lime Twister Stonecrop foliage with creamy-colored edges will turn red in the cool seasons and produce rose-pink blooms from August to October.



## RED CARPET STONECROP

*Sedum ochroleucum* 'Red Wiggle'

The needle-like leaves of the Red Carpet Stonecrop create a low mat with green new growth on burgundy foliage. This mounding perennial prefers a sunny site with well-drained soil. It can be used in rock gardens or as erosion control.



## WHITE STONECROP

*Sedum album* subsp. *teretifolium* 'Murale'

White Stonecrop, an evergreen perennial with a creeping mat habit, has bead-like leaves that turn reddish green in the fall. The common name comes from the star-shaped white flowers that cover the plant from late spring to early summer.



THE HOMES & FEATURES OF

# WILD WEST TOWN



**LAND OFFICE**



**HOTEL**



**WELLS FARGO  
WESTERN BUILDING**



**MISS KITTY'S SALOON**



**WESTERN DRY GOODS STORE**



**WESTERN SCHOOLHOUSE**

**← BACK**

**TOP**

**MORE →**



THE HOMES & FEATURES OF  
**WILD WEST TOWN**



**SMALL  
WESTERN HOUSE**



**WESTERN STORE**



**TRAIN STATION**



**JAIL**



**LUCKY CUSS  
WESTERN SALOON**



**WATER TOWER  
TOP**



**SCHOOLHOUSE**

**← BACK**

**MORE →**





©Applied Imagination

# THE ART OF WHO LIVES HERE?

This wonderful collection is on loan from Paul Busse's studio, Applied Imagination. The distinct artistic process used by this studio has been honed over the course of about three decades.

Plant materials are sustainably sourced in local forests. Bits of tree bark can be roof shingles, baby acorns make good doorknobs, and vines become railings. The plant material is glued to the structure, which is then covered in a water-based varnish to keep the plant material from breaking down.

← BACK

TOP

MORE →

# THE PLANTS OF WHO LIVES HERE?



## LACELEAF JAPANESE MAPLE

*Acer palmatum* var. *dissectum* 'Viridis'

The Giraffe House resident has been nibbling in the landscape! Even the Giraffe's long neck cannot reach all of the bright green leaves of the Laceleaf Japanese Maple, which will turn vivid shades of yellow and red in the fall.



## TICKSEED

*Coreopsis* UPTICK™ Gold & Bronze 'Baluptgonz'

With its tidy mounding habit and long summer blooms, Tickseed attracts birds, butterflies and other pollinators. Ticks are a tasty snack for possums, making tickseed a natural fit at the Possum House.



## SILVER THYME

*Thymus argenteus*

Silver Thyme has silvery-white edges that capture the moonlight and a bright, lemony fragrance that could help mask the stench of a skunk on a nighttime stroll.



## GREY OWL JUNIPER

*Juniperus virginiana* 'Grey Owl'

Featuring brilliant, silver-gray foliage, the Grey Owl Juniper attracts birds and other wildlife with its cones and berries. Can you guess whoose house it is planted by?



# THE HOMES AND FEATURES OF WHO LIVES HERE?



**OPOSSUM  
HOUSE**



**GIRAFFE  
HOUSE**



**ZEBRA HOUSE**



**MONKEY HOUSE**



**TIGER HOUSE**

**← BACK**

**TOP**

**MORE →**

All of the homes and features in the Who Lives Here collection are on loan from Applied Imagination.

# THE HOMES AND FEATURES OF WHO LIVES HERE?



**SKUNK HOUSE**



**SNAKE HOUSE**



**PORCUPINE  
HOUSE**



**OWL'S  
CRITTER  
CONDO**



**SQUIRREL  
HOUSE**



**TURTLE HOUSE**



**PEACOCK HOUSE**

**TOP**

**← BACK**

All of the homes and features in the Who Lives Here collection are on loan from Applied Imagination.

**MORE →**

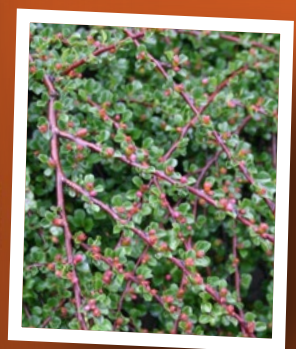




### Talk about horticulture whimsy!

Notice the small “trees” in Fairytale Land. Those are not actually trees but very finely trimmed Littleleaf Boxwood (*Buxus microphylla* 'Golden Dream').

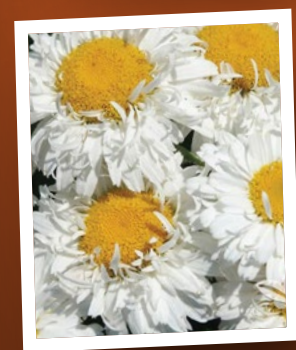
Littleleaf Boxwood are beautiful, round, broad-leaved evergreens. These slow-growing, low-mounding miniatures are great for sculpting topiaries or training into a bonsai.



### Can you spot Snow White's orchard?

The apple trees in the orchard were created with Creeping Cotoneaster (*Cotoneaster apiculatus* 'Tom Thumb').

These low-growing, compact shrubs present charming tiny green leaves that change to red-orange in the fall. Small white flowers are followed by bright red berries.



### Dare to go where dragons dwell!

Do not let the name Shasta Daisy 'Freak!'

(*Leucanthemum* × *superbum* 'Leuz0001' FREAK!) scare you.

Large, semi-double white flowers, which bloom from late spring through summer, are a great addition to a sunny perennial border. The long-lasting blooms of the Shasta Daisy also make it a great cut flower.



LITTLE RED  
RIDING HOOD



THREE LITTLE  
KITTEENS



GOLDIE LOCKS & THE  
THREE BEARS



RAPUNZEL'S  
TOWER



CINDERELLA'S  
CASTLE



CINDERELLA'S CARRIAGE



JACK & THE  
BEANSTALK



the homes  
and features of  
**FAIRYTALE  
LAND**



DRAGON'S CASTLE



PINNOCHIO'S HOUSE



PETER  
RABBIT'S HOUSE



STRAW



BRICK

THREE  
LITTLE PIGS



STICKS



SNOW WHITE



OLD LADY IN THE SHOE

← BACK

TOP

On loan from Applied Imagination.

MORE →



# MODEL TRAIN HISTORY

**1891** Marklin, a toy company, makes the first mass-market model train.

**1896** Carlisle and Finch, headquartered in Cincinnati, Ohio, invents electric model trains.

**1920** The “Golden Age” of model trains.

**1930s** HO and O scale model trains are introduced. The scale of the train model is its relative size in proportion to real trains. HO scale models are 1/87th the size of real trains.

**1942-1945** Production of model trains stops during World War II.

**EARLY 1950** Toy trains are the number one toy for boys.

**MID 1950** Plastic replaces metal as the primary material used to make model trains.

**1968** G scale trains are introduced by Lehmann Gross Bahn. G scale trains are suitable for use both indoors and outdoors and are a favorite of Paul Busse.

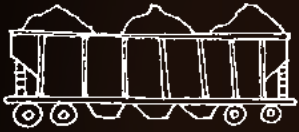


# TRAIN CAR & TRACK IDENTIFICATION



## **ELECTRIC LOCOMOTIVE**

Or diesel for short, provide the motive power for a train.



## **OPEN-TOP HOPPER**

Carries bulk freight such as gravel or coal.



## **COVERED HOPPER**

Carries dry bulk commodities that need weather protection.



## **REFRIGERATOR CAR**

Transports perishable items.



## **FLATCAR**

Holds extra heavy or extra large loads.



## **DOUBLE STACK CAR**

Retains two layers of shipping containers.



## **BOX CAR**

Also known as a railroad car, is enclosed and generally used to carry freight.



## **TANK CAR**

Transports liquids or gaseous commodities.



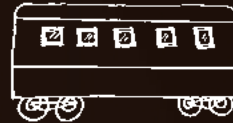
## **CABOOSE**

Is the last car on a freight train.



## **COACH CAR**

Has seats for passengers.



## **SLEEPER CAR**

Is equipped with berths for sleeping.



## **DINING CAR**

Serves meals in the manner of a full-service, sit-down restaurant.



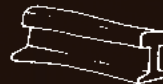
## **DOM CAR**

Has a glass dome on the top of the car for a better viewing experience.



## **TRAIN WHEELS**

Rims on the inside edge of the wheels that keep the car on the track.



## **RAIL**

Two parallel steel beams set a fixed distance apart.



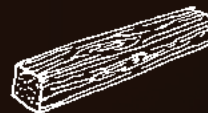
## **GAUGE**

The fixed distance between the two rails. The standard gauge is 4 feet 8.5 inches.



## **SPIKE**

A large nail that is used to secure the track.



## **TIE**

Connects the two parallel rails. Typically made of wood or concrete.



## **BALLAST**

Typically consisting of crushed stone, it forms the trackbed upon which railroad ties are laid.

# TRAIN FUN FACTS

Early locomotives were essentially boilers on wheels, powered by steam and moving as fast as 18 mph.

The United States has the most miles of track at 248,000 miles. That is enough track to go around the world more than eight times.

The first female train engineer in the United States was Ida Hewitt. She worked for a small freight railroad company in West Virginia in the 1870s.

At 13 miles, the longest mainland railroad tunnel goes through the Alps between Italy and Switzerland.

A railroad bridge near Boone, Iowa is named after Kate Shelley for her heroism saving a train crew at the age of 15.

The world's longest train route, 5,800 miles long, runs across Siberia.





# TRAIN TALK

## **BULL**

Railroad police officer.

## **CAR KNOCKER**

Railroad car repair person. The term is derived from a worker who knocks on railroad equipment to check its soundness.

## **DEADHEAD**

Passenger train with no passengers.

## **EIGHT AND SAND**

Term used to wish train crews a safe journey. The number eight represents the highest power setting on modern locomotives and sand is what is applied to wheels to prevent slipping.

## **FALLEN FLAG**

Defunct railroad, having either merged or discontinued operations.



# TRAIN HISTORY

- 1804** Richard Trevithick invents the world's first successful locomotive in England.
- 1833** Andrew Jackson is the first American president to ride on a train. He travels on the Baltimore & Ohio Railroad, the first public railroad in the United States.
- 1886** Railroad companies agree to standardize the gauge (the distance between the rails) to 4 feet 8.5 inches.
- 1895** Electric locomotives are introduced in the United States.
- 1897** Rudolf Diesel invents the diesel engine, which uses less energy than a steam engine.
- 1970** The government creates the National Railroad Passenger Corporation (Amtrak) to operate a nationwide passenger rail system at a time when many railroad companies are in bad financial condition.